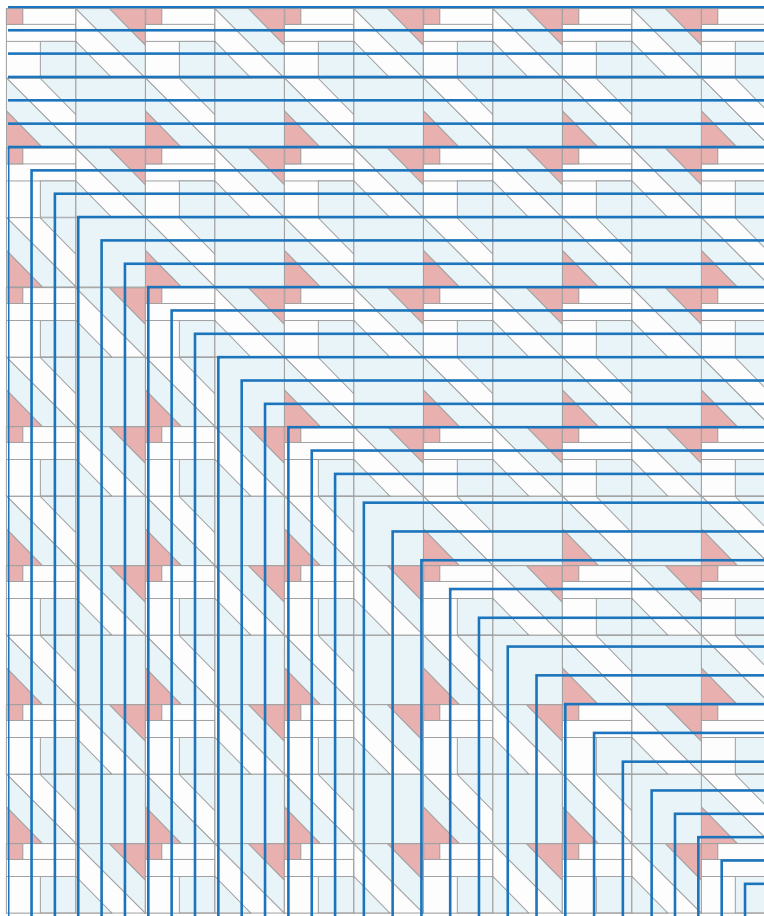


LAUNCH STATUS CHECK

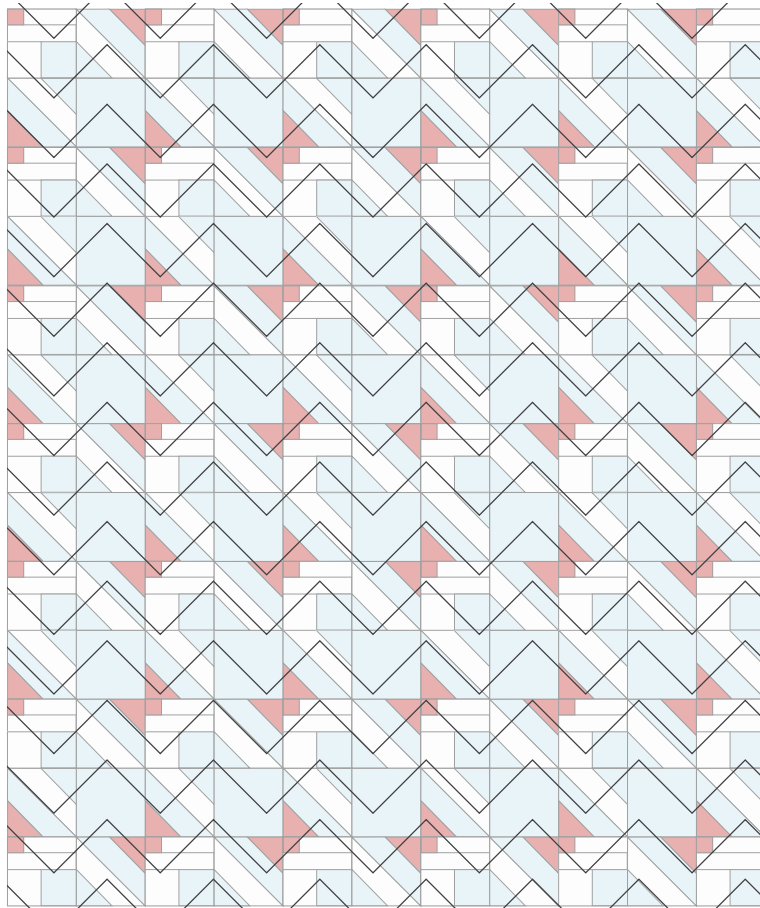
QUILTING IDEAS

Don't let not knowing how to quilt your Launch Status Check stop you from finishing your quilt! To help you out, I have mocked up a few designs that can be done on your domestic machine in order to help you see some different styles and ideas. I recommend using a walking foot and bumping up the stitch length to 3.0-3.5mm for machine quilting on a domestic machine.

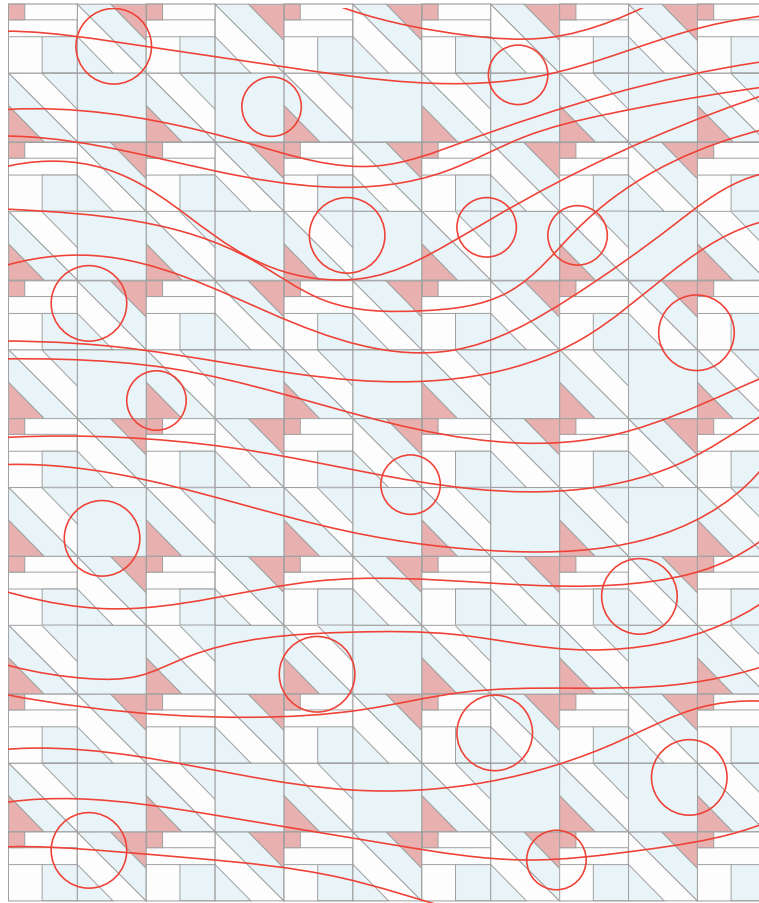
SQUARE ORBIT



1. From the bottom right corner of the quilt mark a square 2" in from the corner. Sew along the line, turning the quilt at the corner.
2. Mark a square 2" from the last one and sew. Repeat across the rest of the quilt top.
3. When you reach the top of the quilt where the square can no longer be repeated, just mark a straight line across the quilt 2" from the last square and sew. Repeat to finish the quilt.



1. Starting in the center of the quilt, draw a chevron style zig-zag line. You can print the template on the next page of create your own in a different size. Make sure the points in the lines meet along the same distance from the center all the way across. Guidelines can help with this. Sew the line.
2. Echo the design, marking every 3-4" from the last one towards the bottom. Sew the lines.
3. Repeat Step 2 going towards the top of the quilt. Sew the lines.
4. At the top and bottom of the quilt, make sure to mark the echo lines even if they aren't fully on the quilt and sew them.



1. Stitch loose wavy lines across the quilt leaving going between 1"-6" apart.
2. Fill in the larger gaps with larger circles and then add a few smaller circles on some of the lines where there is more spacing. You can trace small plates or circular objects you have on hand for stencils.

Vector Path Tracing Template
Launch Status Check